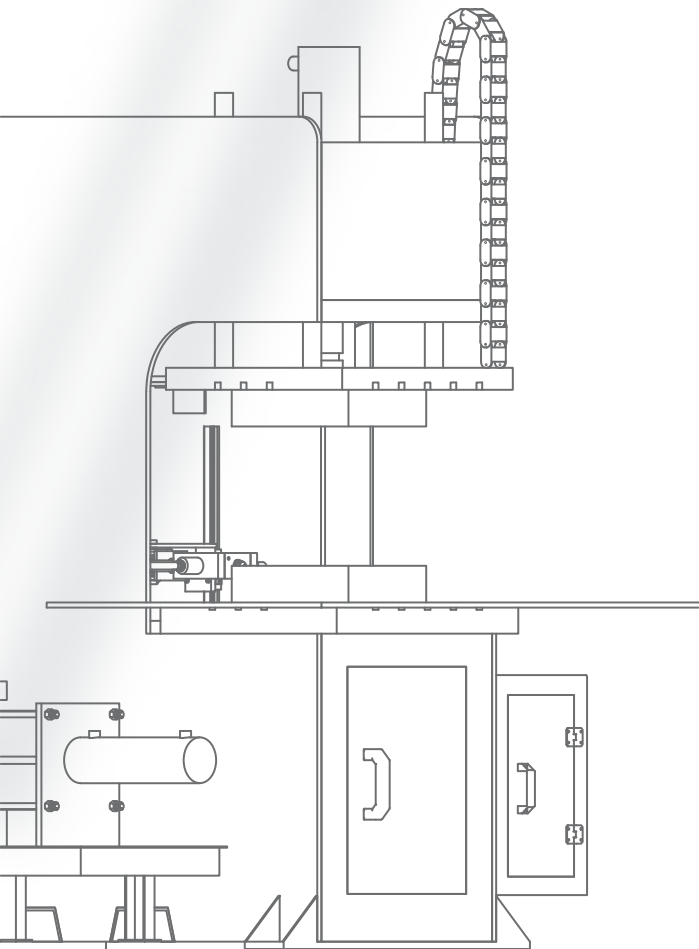


SHREE  
**MAYUR**  
ENGINEERING COMPANY



India's largest mfg.  
of lost wax casting process equipment



## About us



In the year 1989, Mr. Vallabh Ambasana founded a base of big vision, to provide customized solutions with innovation and machines to lost wax casting companies.

To accomplish his father's vision, Mr. Priyesh Ambasana joined the company In April 2014, by them efforts of **36+** years, we built an empire today which has served **solution, machines, technology, service** and **support** to **93% +** Indian IC market along with **9+** other countries.

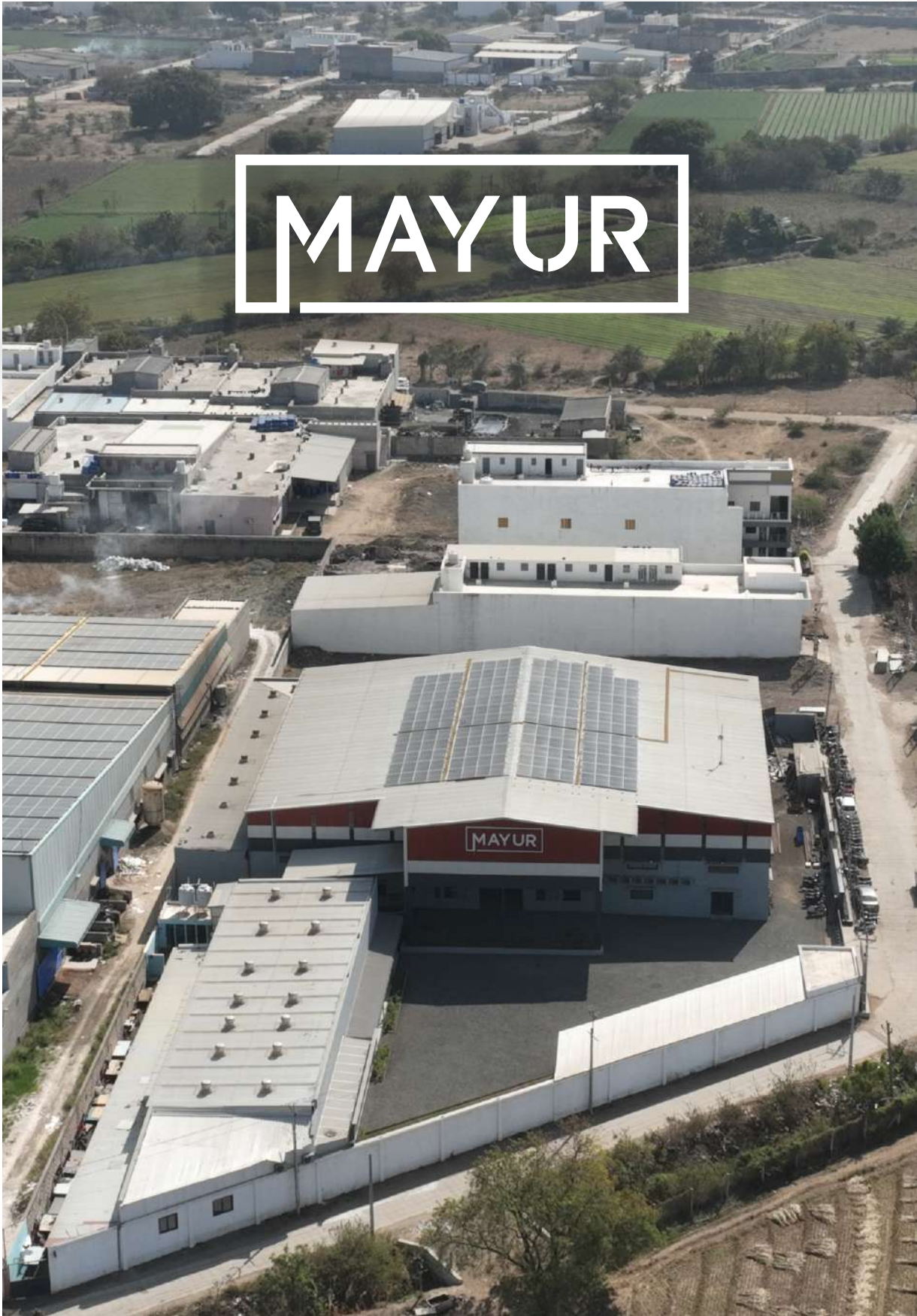
We are located at Rajkot (Dholra, Shapar), having 3 workshops with total area of 1,25,000 sq feet, with 190+ skilled work force, where in 40+ field engineer ever ready for installation, service and support.

We offering range of 30+ process equipment of lost wax casting including basic, advance and fully automatic solutions. We cover, wax preparation, wax injection, pattern assembly, primary coating, back-up coating, wax reclaim, shell pre-heating, shell knock-out.

Now adays we are providing highly advanced wax injectors which are compatible for **aerospace, defense** and **medical sectors**, along with customized shell room automation including stucco equipment, robotic arm, conveyor, programming, which varies one to one.

So finally, we conclude our self as a **one stop solution** of lost wax casting plant equipment.

# MAYUR





# VISION

## MISSION

To become world's largest equipment supplier of lost wax casting process, by providing solutions which are emerged with compatible technological machines, automation, service, support to our customer.

We make feel our customer, as Mayur Eng is a part of their organization, which results us both in a good progressive future together.



## CORE PURPOSE

make easier atomized solution for our customer to expedite their growths. Support you to accomplish your targeted goals by providing on time machine, technical support, break through solutions of bottle neck problems.



## CORE VALUE

Transparency, innovation, customized solution, strongly committed, healthy work environment

Since 1989



Years Experience

Supplied



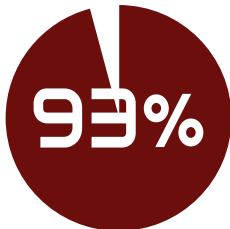
I.C. Plants

Certified



9001 : 2015

Market Cap @



Pan India

Only Company Having



I.C. Machines

Supplied



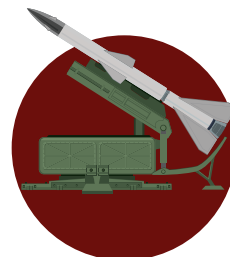
Countries

Supplied to



Aerospace Ind.

Supplied to



Defence Ind.

Supplied to



Medical Ind.

# 4 POST TYPE WAX INJECTOR

## AWI1989-005

A Precise Wax Pattern Is Essential To Achieve A High-quality Surface Finish In The Final Casting. To Develop High-precision Wax Patterns, A 4-post Wax Injection Machine Is Required. It Can Develop Small And Medium Size Wax Patters, Which Are Suitable To Develop In Two-part Die. It Operates In Semi Automation To Save Time And Control Accuracy Of Part



SPECIFICATION	AWI1989-005-12	AWI1989-005-20	AWI1989-005-35	AWI1989-005-50
Clamp Force	12 Metric Ton	20 Metric Ton	35 Metric Ton	50 Metric Ton
Admit Between Pillar	400 X 500mm	600 X 600mm	800 X 650mm	1200 mm
Max Daylight	400 X 500mm	700 X 700mm	800mm	1200 mm
Min Daylight	100mm	100mm	100mm	100mm
Single Shot	2 ltr	3.5 / 6 ltr	8 / 12 ltr	15 ltr
Wax Reservoir	30 ltr	60 ltr	80 ltr	100 ltr
Nozle Height Vertical	Up To 230mm	Up To 300mm	Up To 400mm	Up To 700mm
Injection Presure	0-75 Bar	0-75 Bar	0-75 Bar	0-75 Bar
Top Injection	Possible	Possible	Possible	Possible
Platen Cooling	Possible	Possible	Possible	Possible

# 4 POST WAX INJECTOR WITH HMI

## AWI1989-005

Achieving A Superior Casting Finish Begins With A Highly Accurate Wax Pattern. For Consistent And High-precision Wax Pattern Development, A 4-post Wax Injection Machine Is The Ideal Solution It Can Develop Small And Medium Size Wax Patters, Which Are Suitable To Develop In Two-part Die. It Operates In Semi Automation To Save Time And Control Accuracy Of Part Hmi Provides, Smart Operation, Easy Functionality And Accurate Data, With Die Recipe Storage, All Temperature Zone, All Hydraulic Pressure And Flow Setting And Mechanical Accuracy Can Be Managed With Password Control.



SPECIFICATION	AWI1989-005-12	AWI1989-005-20	AWI1989-005-35	AWI1989-005-50
Clamp Force	12 Metric Ton	20 Metric Ton	35 Metric Ton	50 Metric Ton
Admit	400 / 500mm	600mm	800mm	1200mm
Max Daylight	400 / 500mm	600mm	800mm	1200mm
Min Daylight	100mm	100mm	100mm	100mm
Single Shot	2 ltr	3.5 ltr	8 ltr	15 ltr
Wax Reservoir	30 ltr	60 ltr	80 ltr	100 ltr
Nozzle Height Vertical	Up To 230mm	Up To 280mm	Up To 400mm	Up To 800mm
Injection Pressure	0-75 Bar	0-75 Bar	0-75 Bar	0-80 Bar
Display Size	18" IPC / HMI	18" IPC / HMI	18" IPC / HMI	18" IPC / HMI
Platen Cooling	Possible	Possible	Possible	0-80 Bar
Curtain Safety Sensor	Optional	Optional	Optional	Optional
Wax Level Sensor	Possible	Possible	Possible	Possible

# C-FRAME TYPE WAX INJECTOR

## CWI-1989-006

When A Casted Part Required To Use For Aerospace, Defence Equipment & Medical Surgery, The Casting Manufacturer Need To Be Very Focused On High Accuracy Of The Casted Parts And Other Many More Points, To Meet That Precision C-frame Wax Injectors Are Suitable Option, Which Provide Accuracy, Data, Controls On Finger Tips.



SPECIFICATION	CWI1989-006-12	CWI1989-006-20	CWI1989-006-35
Clamp Force	12 Metric Ton	20 Metric Ton	35 Metric Ton
Admit	600 X 450mm	700 X 550mm	800 X 650mm
Max Daylight	500mm	600mm	700mm
Min Daylight	100mm	100mm	100mm
Single Shot	2 ltr	4 ltr	8 ltr
Wax Reservoir	30 ltr	60 ltr	80 ltr
Nozle Height Vertical	Up To 230mm	Up To 280mm	Up To 350mm
Injection Pressure	0-75 Bar	0-75 Bar	0-75 Bar
Display Size	18" IPC / HMI	18" IPC / HMI	18" IPC / HMI
Platen Cooling	Possible	Possible	Possible
Curtain Safety Sensor	Optional	Optional	Optional
Wax Level Sensor	Possible	Possible	Possible

# VERTICAL WAX INJECTION MACHINE

## VWI1989-004

Lost Wax Casting Is Mainly Used Where Complexity Of A Job Cannot Be Achieved By Basic Type Of Castings, And To Produce That Level Of Complex Cast Awkward Type Of Geometric Wax Patterns Need To Develop, A Vertical Wax Injector Is Designed To Produce Complex And Volumetric Wax Patterns, So It Is The Best Suitable Machine For The Same.



SPECIFICATION	REGULAR	ADVANCE	ADVANCE PLUS	SMART
Daylight	350/450/550mm	350/450/550mm	350/450/550mm	350/450/550mm
Nozzle Center	300 /350 /400mm	300 /350 /400mm	300 /350 /400mm	300 /350 /400mm
Single Shot	7/10/16 ltr	7/10/16 ltr	7/10/16 ltr	7/10/16 ltr
Wax Reservoir	18/30/30 ltr	18/30/30 ltr	18/30/30 ltr	18/30/30 ltr
Heating Media	Water	Water	Water	Water
Heat Source	Water Immersion	Water Immersion	Water Immersion	Water Immersion
Clamp Force	6 Ton	6 Ton	6 Ton	6 Ton
Injection Pressure	0-60 Bar	0-100 Bar	0-100 Bar	0-100 Bar
HYD. Pump	Gear Pump / Vane Pump	Variable Displacement Pump		
Motor	3 HP	5 HP	5 HP	5 HP
Die Table	450 mm Dia.	450 mm Dia.	450 X 450 X 40mm Thick	450 X 450 X 40mm Thick
Service Table	4mm Thick Fabricated	4mm Thick Fabricated	12mm Thick Grinded	12mm Thick Grinded

# FLOOR LEVEL WAX INJECTOR

## FLWI-1989-030

It Is A Unique Wax Injection Machine Specially Developed To Provide Solution To The Big Tool Using Customers. It Can Inject 20 Kg Plus Size Wax Patterns, It Helps To Get Highest Volume Wax Patterns Without Uplifting The Die/tool To Any Platform, It Injects The Wax In To The Tool At Floor Level Or On The Fork Lift, Which Makes The Work Easier It Can Be Developed With Shuttle Table Option To Manage 2 Dies At One Time, And Help To Reduce Production Time Line, Also Provision Of Horizontal Injection And 2 Nos Of Hoist For Double Operation.



SPECIFICATION	
Clamp Force	6 Metric Ton
Admit	1200mm
Max Daylight	1200mm
Min Daylight	100mm
Single Shot	30 ltr
Wax Reservoir	150 ltr
Nozzle Height Vertical	Up To 800mm
Injection Pressure	0-100 Bar
Motor	5 HP
Hyd. Pump	Variable Displacement Pump

# WAX RUNNER EXTRUDER

## WREX1989-008

In The Steps Of Lost Wax Casting Process, The Wax Patterns Have To Be Coated With Ceramic Materials, But Due To Small Sizes It Is Hard Coat Each Separately So The Best Way Is To Make A Tree Of The Similar Parts, Which Required Runners To Attach The Wax Part On It. The Wax Runner Extruder Uses To Develop Runner In Different Sizes From 10 Mm Round / Square Shaped To 100 Mm Round / Square / Triangle Shaped, In Different Length As Per Requirement



SPECIFICATION	
Wax Tube	15 ltr
Max Runner Size	100mm X 100mm
Extrusion	By Hydraulic System
Extrusion Force	15 Ton
Barrel Heat Source	Mica Bend Heater
Die Holder Heat Source	Mica Bend Heater
Die Holder	110mm Runner Die, M.s. Made. (Square, Round, Triangle)

# PATTERN ASSEMBLY TABLE

## PAT1989-010

To Stick Wax Cup With Wax Runner And Wax Patterns With Runner Sides, The Specific Point Needs Hot Knife To Melt Runner Surface And Wax Pattern Gate Surface To Stick Together, A Pattern Assembly Table Is The Station To Develop The Trees With Proper Tree Holding Fixtures, Lighting And Fume Extraction.

A Pattern Assembly Table Is Equipped With 2 Big Size Or 4 Small Size Hot Palates, 2 Or 4 Nos. Power Socket And Soldering Iron Stands, Adjustable Tree Holding Stands For Each Operator, White Led Light, Heavy Exhaust Fan, Lockable Drawer For Each Operator.



SPECIFICATION	
Material	M.S. Fabricated
Work Table Size	800mm X 2200mm
Heating Plate	2 Nos. Of 300 X 450mm
Working Temp.	250°c Max
Heater Kw	6kw
Lighting	Nos 2 15 Watt Led Lights
Power Point	Nos 4 16 Amp Switch Board
Fume Exhaust	15inch Exhaust Fan
Runner Holding	Adjustable Mechanical Arrangement

# HIGH SPEED SLURRY MIXER

## HSSM1989-011

A Layer Of Primary Slurry Applies On Wax Pattern Which After Whole Process Represent The Surface Of Casting, Which Is A Blend Of Zircon + Colloidal Silica, It Required High Speed Rotation Of 4-5 Hours To Achieve Desire Viscosity, The High-speed Mixer Uses To Prepare The Primary Slurry With Variable Speed Control And Tool Up- Down Facility.



SPECIFICATION	
Capacity	160 ltr
Tank Material	S.S. 304
Mixing RPM	Variable 0-2800 RPM
Material Handling	Drum Tilting Facility
Mixing Tool Material	200mm Dia. Teflon Disc With Grooves
Agitator Movement	Pneumatic Cylinder

# SLURRY COATING MACHINE

## SCM1989-013

To Apply Primary Or Backup Slurry Layers On Cluster The Slurry Coating Machine/tanks Are Required, It Rotates On Fix / Variable Speed To Keep Slurry Material In Same Viscous Condition, Also Provided With Baffle Which Helps To Blend It Continuous.



SPECIFICATION			
Tank Diameter	600 / 750 / 900mm	750 / 900mm	900mm
Tank Deep	600mm	750mm	900mm
Tank Material	S.S. 304	S.S. 304	S.S. 304
Slurry Blending	L & U Shape Baffle	L & U Shape Baffle	L & U Shape Baffle
Tank Rpm	22 RPM	22 RPM	22 RPM
Tank Rotation	Geared Motor	Geared Motor	Geared Motor

# SLURRY COATING FOR ROBOTIC APPLICATION

## SCM1989-013

This Is A Specially Designed Slurry Coating Machine/tank To Apply Primary And Backup Slurry Layers On Big Size Of Clusters, Which Are Not Possible To Operate Manually. It Rotates On Variable Speed To Keep Slurry Material In Same Viscous Condition, Also Provided With Baffle Which Helps To Blend It Continuous.



SPECIFICATION	
Tank Diameter	1200mm - 2500mm
Tank Deep	1200mm - 2000mm
Tank Material	S.S. 304 4mm
Slurry Blending	S.S 304, L Shape / U Shape Baffle
Chilled Water Circulation	Possible
Tank Rpm	0-22 RPM Adjustable
V.F.D	Provided
Tank Rotation	Geared Motor

# SAND RAINER

## SR1989-14

To Apply A Coat Of Zircon Sand Uniformly On Slurry Dipped Cluster, Sand Rainer Is Required. It Rotates The Sand With The Use Of Rotary Drum Fins; Sand Falls Down In Straight Lines And Applies A Layer Of Sand On Slurry Coated Cluster Evenly. It Is Used Mainly For Manual Coating Process.



SPECIFICATION	
Working Area	Diameter 800mm X Deep 900mm
Sand Raining Area	380mm X 380mm
Sand Raining	By Fins Rotary Drum.
Structure Material	M.s. Fabricated
Drum Rotation	Geared Motor
Drum Rpm	22 RPM

# ROTARY DRUM TYPE SAND RAINER

## RDSR1989-015

This Machine Mainly Uses For Auto Shell Room And Manual Slurry Coating Application Purpose, It Is More Suitable For Big Size Wax Cluster Which Are Hard To Coat Manually, It Is Provided With Sand Auto Loading, Auto Start Stop Facility, Available In Customize Sizes



SPECIFICATION	
Working Area	Diameter 1200mm X Deep 1000mm.
Sand Flow Stream Area	750mm X 750mm
Structure Material	M.S. Fabricated
Sand Raining	By Fins Rotary Drum
Drum Rpm	12 RPM
Drum Rotation	Drum Placed On, P.U. Coated Casted Wheels Fitted On Rotary Shaft
Dust Suction	Dust Suction Hopper At The Front Top Area.
Stone Separator	Attached At Side Of Sand Hopper In Slant For Easy Separation Of Stones.
Uniform Raining	Sand Hopper Vibrates By Electric Vibrating Motor.
Sand Feeding	Auto Sand Feeding Facility

# SAND FLUIDIZED COATING SET

## SDCS1989-016

To Apply Different Grain Sized Back-up Sand On Slurry Coated Shell, The Sand Fluidized Drums Are Used, It Provides Fatigue Less Operation, Uniform Sand Layering. It Helps To Manage 3 Types Of Sand At A Time.



SPECIFICATION			
Drum Diameter	600 / 750 / 900mm	750 / 900mm	900mm
Tank Deep	420mm	420mm	420mm
Drum Material	M.S. Fabricated	M.S. Fabricated	M.S. Fabricated
Sand Fluidizing	Pressurize Air From Blower		
Air Distribution	Metal Nozzle	Metal Nozzle	Metal Nozzle
Dust Suction	Hopper Provided At The Top Of Drum		

# DUST COLLECTOR

## DC1989-017

A Dust Collector Is Required To Collect Fine Dust Produce During Sand Raining Process, Sand Fluidisation Process.it Helps To Keep The Area Clean Visible, Also It Is Mandatory For Human Health Safety.



SPECIFICATION	DC1989-017-02	DC1989-017-04	DC1989-017-06
Filters	PTFE Made 2nos. Filters	PTFE Made 4nos. Filters	PTFE Made 6nos. Filters
Dust Collection Capacity	Up To 5 Microns	Up To 5 Microns	Up To 5 Microns
Filter Cleaning	Auto Cleaning Facility	Auto Cleaning Facility	Auto Cleaning Facility
Suction Blower	3 HP	5 HP	7.5 HP
Dust Collection	Conical Bottom With Movable Square Cabinet		

# WAX AND WATER DE WAXING TANK

## WD1989-018

The Dewaxing Tank Is Used To Remove Wax From Dry Solid Shell After Completion Of Specific Drying Period, To Pre-heat The Same Before Pouring The Molten Metal Into It.



SPECIFICATION	
Dewaxing Area	L 1200mm X W 600mm X H 800mm
Dewaxing Tank Material	S.S. 304
Structure Material	M.S. Fabricated
Heat Source	Gas Burner
Working Temp	120°c
Fuel Type	LPG / PNG
Thermal Insulation	Tank Bottom Insulated With Refractory Bricks And Cerawool, Tank Sides Insulated With Cerawool Blankets.

# WAX FILTRATION AND COLLECTING TANK

## WFCT1989-021

This Machine Helps To Filter The Heavy Ceramic Particles From The Reclaimed Wax Dewaxed From Shell, It Has Wire Mesh Fitted 2 Nos Of Drums Which Help To Break The Impurities Within It And Allow Wax To Pass Through, Also It Helps To Store The Wax For While Until Next Cycle Will Start.



SPECIFICATION	
Tank Capacity	200 ltr / 300 ltr
Tank Size	750mm X 750mm
Tank Material	S.S. 304
Structure Material	M.S. Fabricated
Filtration Tank	450mm X 500mm
Filtration	40mess Wire Mesh At Bottom Of Filtration Tank
Heat Source	Mica Bend Heater / Bobbin Heater
Working Temp	120°c

# WAX RECLAIM TANK GAS FIRED

## WRT1989-020

The Wax After Dewaxing Process Is Containing Dust Particles And Water Particle Within Itself, The Wax Reclaim Tank Used To Separate The Impurities And Settle It To Its Conical Bottom And Burn The Water Particle. It Provides 75% Filtered Wax To Reuse.



SPECIFICATION	
Tank Capacity	500 ltr / 1000 ltr / 1500 ltr
Tank Size	Diameter 1050mm X Height 2000mm
Tank Material	S.S. 304
Structure Material	M.S. Fabricated
Heat Source	Gas Burner
Working Temp	120°c
Fuel Type	LPG / PNG
Thermal Insulation	Tank Bottom Insulated With Refractory Bricks And Cerawool, Tank Sides Insulated With Cerawool Blankets.

# WAX RECLAIM TANK THERMIC OIL TYPE ELECTRIC HEATED

## WRT1989-020

The Wax After Dewaxing Process Is Containing Dust Particles And Water Particle Within Itself, The Wax Reclaim Tank Used To Separate The Impurities And Settle It To Its Conical Bottom And Burn The Water Particle. It Provides 75% Filtered Wax To Reuse. Thermic Oil Provide To Maintain Wax Properties Same As It Is, Also Ensure Flame Safety.



SPECIFICATION	
Tank Capacity	1000 ltr
Tank Size	Diameter 1100mm X 1270mm
Tank Material	S.S. 304
Structure Material	M.S. Fabricated
Heat Source	Bobbin Heater / Mica Bayd Heater
Working Temp	120°C
Fuel Type	Electric
Thermal Insulation	Tank Bottom Insulated With Refractory Bricks And Cerawool, Tank Sides Insulated With Cerawool Blankets.

# WAX MELTER

## WM1989-001

To Begin Lost Wax Casting Process Melted Wax At A Desire Temperature Is Required, A Wax Melter Helps To Melt Solid Wax Slabs, Fresh Wax Pallets At Preset Temp, Which Gives A Batch Of Liquid Wax In Short Time To Expedite The Process.



SPECIFICATION	Electric	Thermic Oil
Capacity	50/100/150/200/300/400/500 ltr	100/150/200/300/400/500 ltr
Heat Source	Mica Bend Heater	Ceramic Bobbin Heater
Tank Material	S.S. 304	Inner Tank S.S. 304 / Jacket Tank M.S.
Working Temp	100°c	100°c

# WAX CONDITIONER

## WC1989-002

Wax Conditioner Is Used To Maintain The Temperature And Viscosity Of Molten Wax Prepared In Wax Melter, And Make Homogeneous For Injection Purpose.



SPECIFICATION	ELECTRIC	THERMIC OIL
Capacity	50/100/150/200/300/400/500 Ltr	100/150/200/300/400/500 Ltr
Heat Source	Mica Bend Heater	Ceramic Bobbin Heater
Tank Material	S.S. 304	Inner Tank S.S. 304 / Jacket Tank M.S.
Agitation	M.S. Made Agitator With Geared Motor	M.S. Made Agitator With Geared Motor
Working Temp	100°c	100°c

# THERMIC OIL HEATING CIRCULATION UNIT

## THCU 1989 - 029

For Wax Transfer Automation Wax Transfer Pipeline Are Used, To Maintain Temperature Of Wax Through The Length Of Pipe, Thermic Oils Passes Through The Jacket Line, A Thermic Oil Unit Provides Pressurized Oil Flow With Controlled Temperature To Maintain Even Heat At Each Point Of Line.



SPECIFICATION	Electric
Capacity	75 ltr
Heat Source	Ceramic Bobbin Heater
Tank Material	M.S.
Thermic Oil Circulation	Rotary Gear Pump
Motor Rating	1 HP
Working Temp	100°c

# CENTRALIZE WAX FILLING UNIT

## CWF1989-003

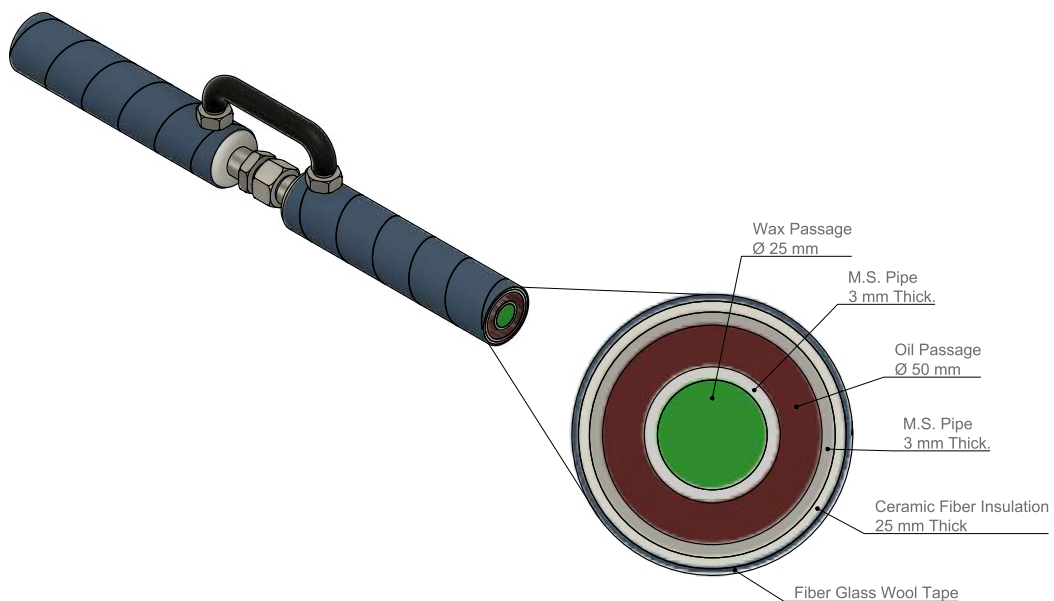
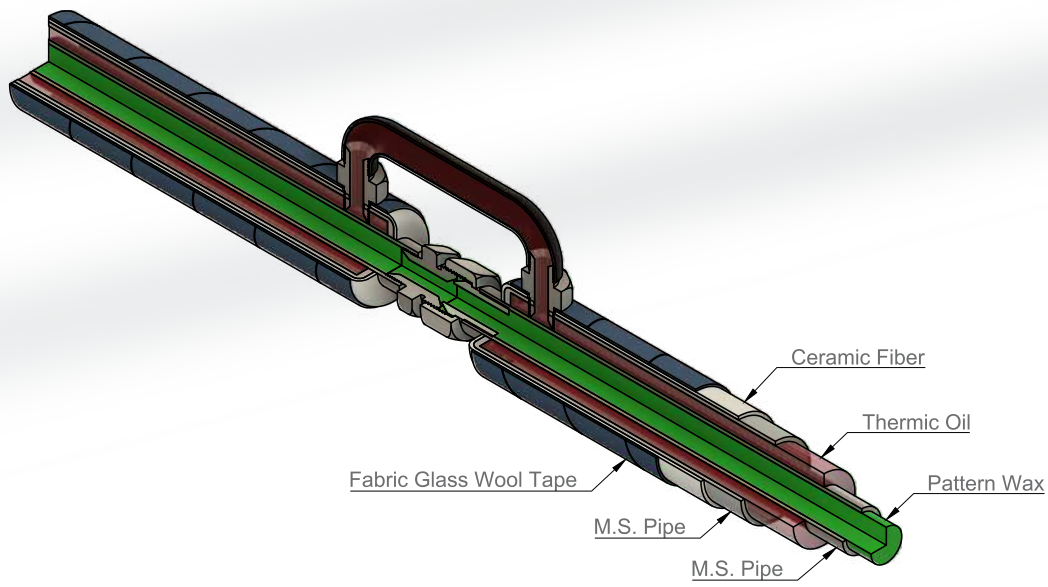
A Centralize Wax Filling System Is Used To Supply Paste Condition Wax To The Reservoir Of Wax Injectors, Stirrer With Geared Motor Provided To Maintain The Wax In Homogeneous Condition, Ceramic Heater Provided To Maintain Wax Temp. And Thermic Oil Temp. A Rotary Gear Pump Provided To Supply Wax In Jacked Pipeline, Another Rotary Gear Pump Provided To Supply The Hot Thermic Oil Through The Whole System, Which Maintains Whole Line Wax At Same Temperature. It Helps To Avoid Miss Handling Of Hot Wax, Save Time, Avoid More Man Power.



SPECIFICATION	
Capacity	200 ltr / 300 ltr
Heat Source	Ceramic Bobbin Heater
Tank Material	Inner Tank S.S. 304 / Jacket Tank M.S.
Agitation	M.S. Made Agitator With Geared Motor
Working Temp	Up To 75°C
Wax Transfer	Rotary Gear Pump
Thermic Oil Circulation	Rotary Gear Pump

# PIPELINE AND CONNECTIONS

We Provide A Unique And Customized Automation Of Wax Transfer By The Insulated Jacketed Pipeline, Which Helps To Transfer Same Temperature Homogeneous Past Wax From One Point To Another Point, It Is A Combination Of 4 Materials In Sequence, Small Pipe For Wax At Center, Another Pips Covers It And Make Gape Between To Pass The Thermic Oil, These Both Are Insulated With Ceramic Fiber Blanket, And Finally Wrapped With Glass Wool Tape To Make If Fire Proof.



# MOBILE WAX FILLING TANK

## MWFT 1989-31

A Mobile Wax Filling System Is Used To Supply Paste Condition Wax To The Reservoir Of Wax Injectors, Stirrer With Geared Motor Provided To Maintain The Wax In Homogeneous Condition, Ceramic Heater Provided To Maintain Wax Temp. And Thermic Oil Temp. A Rotary Gear Pump Provided To Supply Wax In Jacked Pipeline, Another Rotary Gear Pump Provided To Supply The Hot Thermic Oil Through The Whole System, Which Maintains Whole Line Wax At Same Temperature. It Helps To Avoid Miss Handling Of Hot Wax, Save Time, Avoid More Man Power.



SPECIFICATION	
Capacity	200 ltr / 300 ltr
Heat Source	Ceramic Bobbin Heater
Tank Material	Inner Tank S.S. 304 / Jacket Tank M.S.
Agitation	M.S. Made Agitator With Geared Motor
Working Temp	Up To 75°C
Wax Transfer	Rotary Gear Pump
Thermic Oil Circulation	Rotary Gear Pump

# SHELL PRE HEATING FURNACE

## SPHF1989-023

A Shell Pre Heating Furnace Us Required To Backing The Dewaxed Shell To Make It Able To Pour, It Is Capable To Give Heat To A Shell From 0-1100 Degree, According To The Size Of Shell. It Is Equipped With Gas Fired Burners, Temperature Modulation System. Air Preheating Recuperator Provision At Heat Draft Chamber.



SPECIFICATION	
Chamber Size	L 1500mm X W 1500mm X H 1000mm
Structure Material	M.s. Fabricated
Insulation	Refractory Bricks And Cerawool Blankets
Heat Source	Gas Burner / Ldo Burner
Fuel	LPG / PNG / LDO
Door Open Close	By Chain Sprocket Mechanism Operated By Geared Motor
Working Temp	0-1100°c
Fuel Consumption Control	S.S. 316 Made Air Heating Recuperator And Burner Modulation Facility Provision.

# VIBRATING KNOCK OUT MACHINE

## KOM1989-024

The Ceramic Layer Of Metal Poured Shell Has To Remove Without Any Damage Caused To The Casted Metal Parts, The Knockout Machine Removes It Very Quickly And Easily.



SPECIFICATION	
Admit	500mm
Max Daylight	565mm
Min Daylight	265mm
Knocking	Vibrating Chipper
Clamping	Pneumatic Cylinder
Structure	M.S. Fabricated

# ACOUSTIC CHAMBER TYPE KNOCK OUT MACHINE

## ACKOM1989-025

This Machine Required To Remove Ceramic Layer From A Metal Poured Shell, The Acoustic Chamber Reduce The Heavy Noise Produced, Also Ensure Safety Of Operator Ears, And Hands. The Dust Collector Helps To Suck All The Dust From The Chamber For Visible Activity And Pollution Control Purpose



SPECIFICATION	
Admit	500mm
Max Daylight	565mm
Min Daylight	265mm
Knocking	Vibrating Chipper
Clamping	Pneumatic Cylinder
Structure	M.S. Fabricated
Acoustic Chamber	All Sides Insulated With Woolen Material
Stucco Drain	Auto Door Open Close By Pneumatic Cylinder And Drain By Vibration.
Dust Collection	2 PTFE Cartridge Filter Typr Duct Collector Provision

# ABRASIVE CUT OFF MACHINE

## ACOM1989-026

An Abrasive Cut Off Machine Specifically Used To Cut Gates Of Small Size Casted Trees, The 400 Mm Fire Blade Provided For Safe And Smooth Cutting, An Up-down Adjustable Mechanism Provided To Manage Hight Of Blade According To The Gate Size.



SPECIFICATION	
Cutting Disc	Dia 200mm – Dia 400mm
Disc Material	Abrasive Type
Cutting Speed	1500 RPM
Disc Adjustment	Screw Mechanism
Capacity	10mm To 45mm Part Size
Motor	5 HP

# SAND BLASTING MACHINE

## SBM1989-027

To Clean The Casted Parts And To Make Each Surface Similar, It Is Required To Blast The Sand On Casting Surface With High Pressure, The Sand Blasting Machine Use For Same.

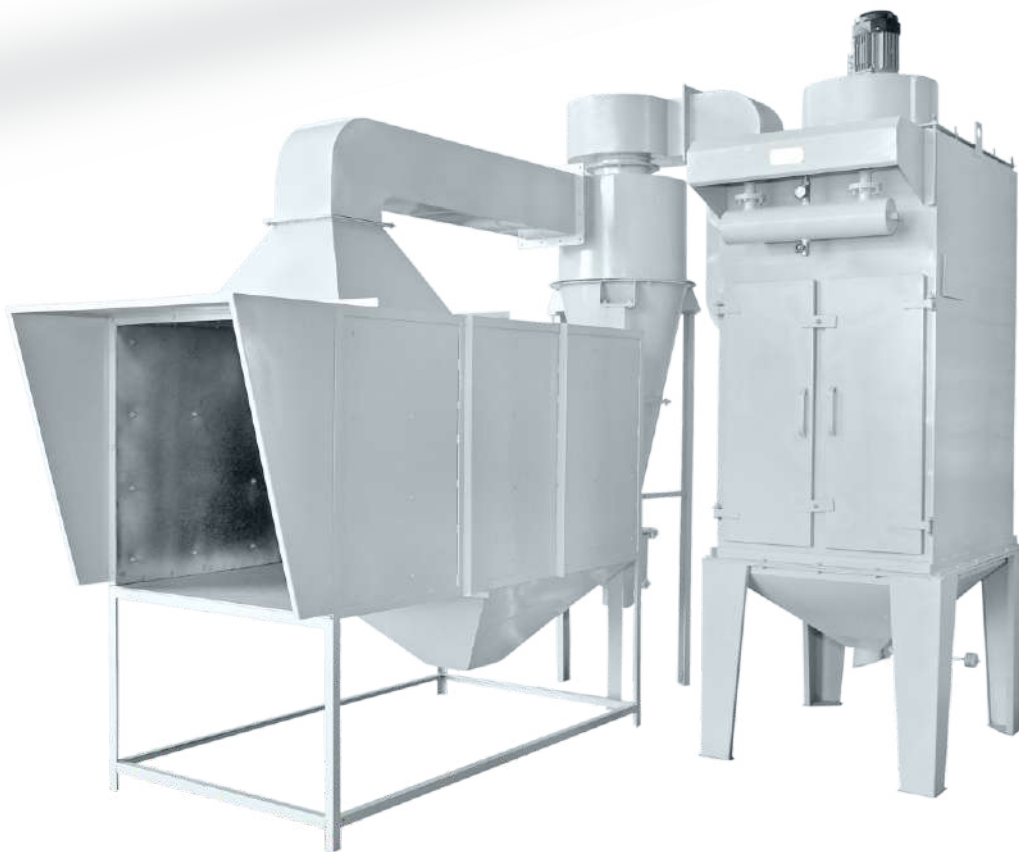


SPECIFICATION		
Sand Storage	1000kg	1500kg
Tank Size	Dia 800mm X Deep 1200mm	Dia 1000mm X Deep 1500mm
Tank Material	5mm Thick M.S.	8mm Thick M.S.
Air Pressure	6 Bar	6 Bar
Sand Flow Control	By Rubber Coated Butterfly Valve	By Rubber Coated Butterfly Valve
Blasting Nozzle	M.S. Made 4mm Hole	M.S. Made 6mm Hole

# SAND BLASTING SET UP


## SBS1989-028

Sand Blasting Setup Is A Work Station To Clean The Casted Component, Where Work Done More Easy, Heavy Dust Particle Collected Through Cyclone Separator And Light Dust Particle Collected By Dust Collector Which Prevent Operator Health.




### SPECIFICATION

Blasting Cabin	Depth 2150mm X Width 1500mm X Height 1050mm
Working Area	Depth 1900mm X Width 1500mm X Height 900mm
Working Height	840mm From Floor
Sand Reclaim	From Bottom Hopper
Heavy Dust Separation	Cyclone Separator Between Cabin And Dust Collector Provided For Heavy Dust Separation And Collection
Dust Collection	06 PTFE Cartridge Filter Type Dust Collector Provision

 +91 90334 10864

 [www.shreemayurgroup.com](http://www.shreemayurgroup.com)

 [sales@shreemayurgroup.com](mailto:sales@shreemayurgroup.com)

 Dholra road, Shapar - Veraval,  
Rajkot - 360024 (Gujarat) India